

# LINTON LANDSCAPE & MAINTENANCE FACILITY

0664-006

154

A PLANNED UNIT DEVELOPMENT  
 BEING A REPLAT OF PORTIONS OF TRACTS 100 - 105 OF SECTION 20, ACCORDING TO  
 PALM BEACH FARMS CO. PLAT No. 1, AS RECORDED IN PLAT BOOK 2,  
 PAGES 26 THROUGH 28, INCLUSIVE, PUBLIC RECORDS OF  
 PALM BEACH COUNTY, FLORIDA; LYING IN SECTION 20, TOWNSHIP  
 46 SOUTH, RANGE 42 EAST, PALM BEACH COUNTY, FLORIDA.  
 SHEET 2 OF 2 NOVEMBER, 1999

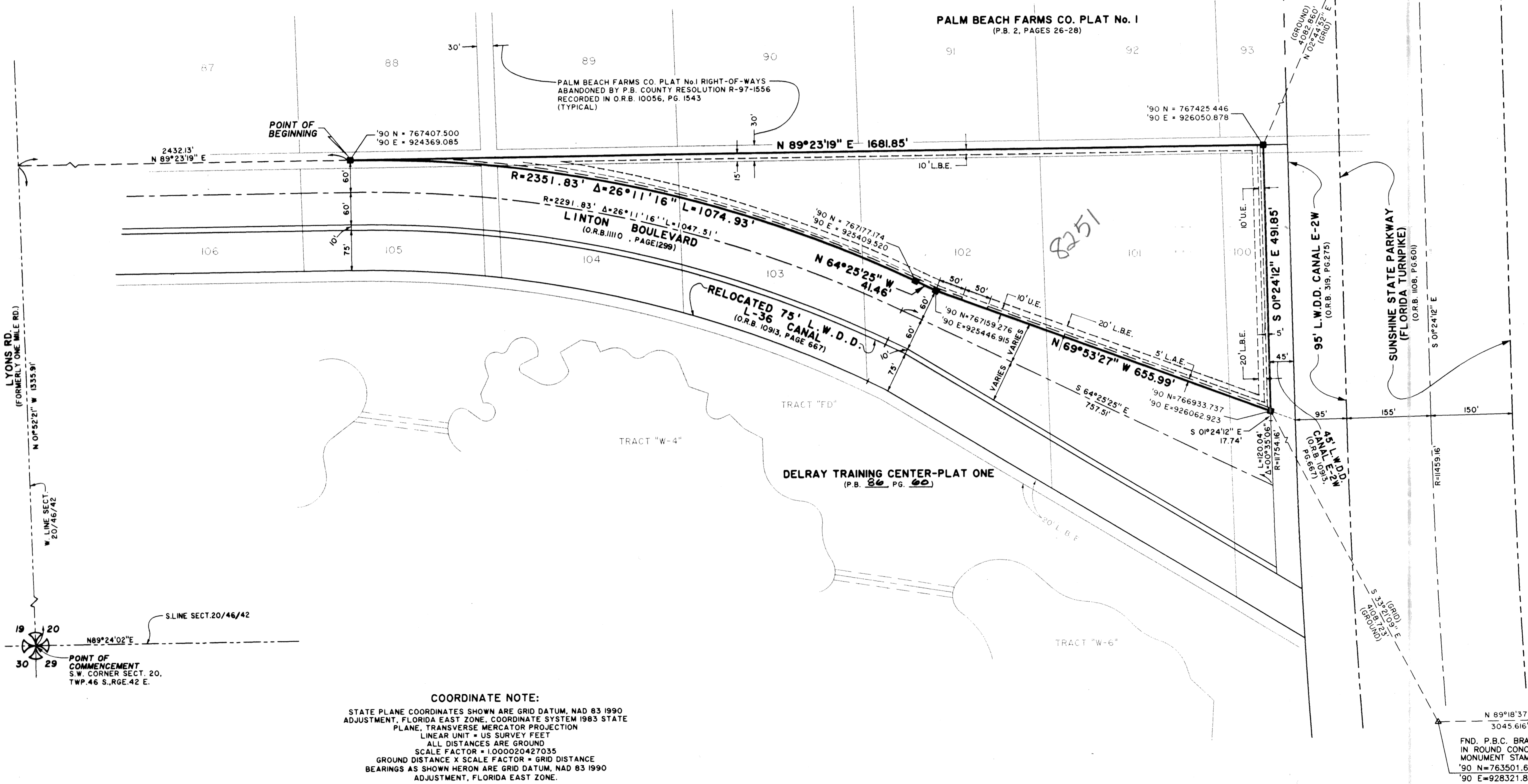
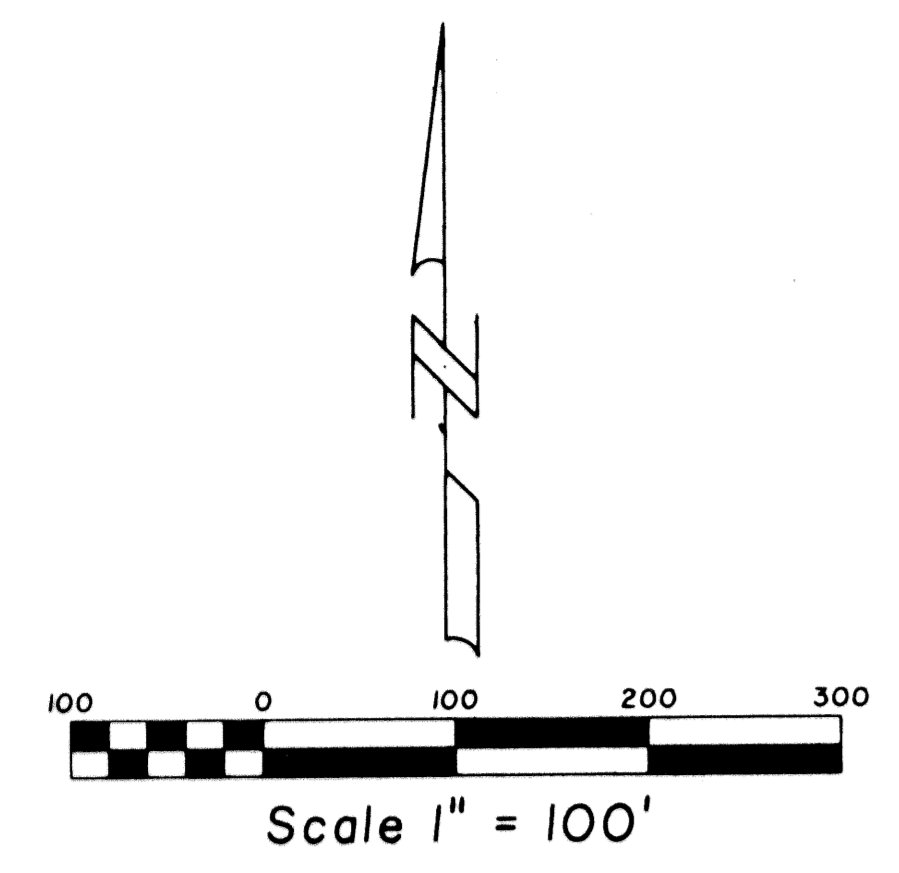
N 1/4 CORNER OF  
 SECTION 21, TOWNSHIP 46 S,  
 RANGE 42 E, FND. P.B.C. BRASS  
 DISK IN ROUND CONCRETE  
 MONUMENT STAMPED 16/21  
 '90 N=771479.030  
 '90 E=929859.146

FND. P.B.C. BRASS DISK IN  
 CONCRETE STAMPED SSP 17  
 '90 N=771503.695  
 '90 E=926246.621

(GRID)  
 S 89°36'32"E  
 3612.54'  
 (GROUND)

FND. P.B.C. BRASS DISK  
 IN ROUND CONCRETE  
 MONUMENT STAMPED GAST  
 '90 N=763538.300  
 '90 E=931367.350

FND. P.B.C. BRASS DISK  
 IN ROUND CONCRETE  
 MONUMENT STAMPED GATTO  
 '90 N=763501.631  
 '90 E=928321.893



LYONS RD.  
 (FORMERLY ONE MILE RD.)  
 W LINE SECT. 20/46/42  
 N 0°52'21" W 1335.91'

POINT OF COMMENCEMENT  
 S.W. CORNER SECT. 20,  
 TWP. 46 S., RGE. 42 E.  
 N 89°24'02" E

**COORDINATE NOTE:**  
 STATE PLANE COORDINATES SHOWN ARE GRID DATUM, NAD 83 1990  
 ADJUSTMENT, FLORIDA EAST ZONE, COORDINATE SYSTEM 1983 STATE  
 PLANE, TRANSVERSE MERCATOR PROJECTION  
 LINEAR UNIT = US SURVEY FEET  
 ALL DISTANCES ARE GROUND  
 SCALE FACTOR = 1.000020427035  
 GROUND DISTANCE X SCALE FACTOR = GRID DISTANCE  
 BEARINGS AS SHOWN HEREON ARE GRID DATUM, NAD 83 1990  
 ADJUSTMENT, FLORIDA EAST ZONE.

SUBDIVISION: Linton Landscape + Maintenance Facility  
 SHEET: 154  
 FLOOD ZONE: 4  
 ZONING: PUD  
 TAX: 81-760  
 PUD NAME: Linton Landscape + Maintenance Facility

Landmark Surveying & Mapping Inc.  
 1850 Forest Hill Boulevard Suite 100  
 (561) 433-5405 West Palm Beach, Florida 33406

**LINTON LANDSCAPE & MAINTENANCE FACILITY**